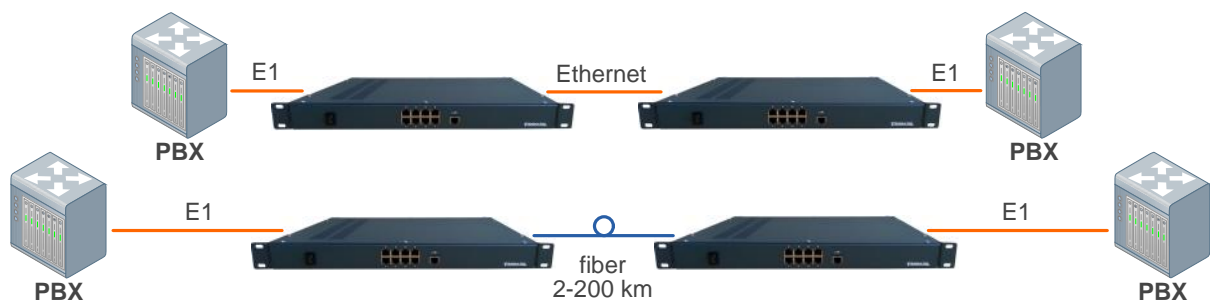


TDMoIP

E1 Ethernet

- 1 8 1
- 1 Gigabit Ethernet, 1 SFP
- WEB , Telnet
- IPv4, IPv6, UDP, RTP, L2TPv3, MPLS, Metro Ethernet
- /



Network Interface

- **Interface** – 10/100 BASE-T Ethernet
- **Standards** – IEEE 802.3 10BaseT, IEEE 802.3u 100BaseTX
- **Type/rate** – 10/100 Mbps autodetection, cable autodetection, full-duplex, half-duplex
- **Number of interfaces** – 4
- **Connector type** – RJ-45, SFP

User Interfaces

- **E1 Interfaces**
- **Standards** ETS 300 166, ETSI TS 101 135, ITU-T Rec. G.703, G.704, G.706, G.711, G.732, G.755, G.796, G.823, G.824, I.431
- **Number of interfaces** – max 8
- **Rate** – 2.048 Mbps
- **Impedance** – 120/ 75 Ohm
- **Connector type** – RJ-45
- **Coding** – HDB3
- **Framing** – Unframed, CAS, CCS, CRC4

Interface Ethernet

- **Standards** - IEEE 802.3 10BaseT, IEEE 802.3u 100BaseTX, IEEE 802.1p VLAN, IEEE 802.1q QoS, IEEE 1P/Q Tagged VLAN, IEEE 802.1D Spanning tree
- **Number of interfaces** – 2
- **Type/rate** – 10/100 Mbps autodetection, cable autodetection, full-duplex, half-duplex
- **Number VLAN** – max 512

Management

- **remote management** – Telnet, HTTP

Design Specifications

- EUROPACK 19", 1U form factor
- Weight 2,3 Kg

Power Supply

- **Voltage** – 12V (+/-20%) or 60V (+/-20%)
- **Power Consumption** – t 10W

Operating conditions

- **Operating temperature:** 0° at +60°
- **Humidity:** 80% at t 25°

TDMoIP

TDM

IP-

E1,

TDM